

# Technical data sheet

## Product features



### Electric fryer 27 kW

<b>Model</b>	<b>SAP Code</b>	00008321
--------------	-----------------	----------



- Basin volume [l]: 2 x 17
- Drain type: Trough the cabinet
- Maximum device temperature [°C]: 190
- Minimum device temperature [°C]: 50
- Material: AISI 304 top plate and cladding
- Heating location: Inside the tank
- Number of baskets: 2
- Basket dimensions [mm x mm x mm]: 280 x 300 x 120

<b>SAP Code</b>	00008321	<b>Loading</b>	400 V / 3N - 50 Hz
<b>Net Width [mm]</b>	800	<b>Basin volume [l]</b>	2 x 17
<b>Net Depth [mm]</b>	730	<b>Number of basins</b>	2
<b>Net Height [mm]</b>	900	<b>Number of baskets</b>	2
<b>Net Weight [kg]</b>	79.70	<b>Basket dimensions [mm x mm x mm]</b>	280 x 300 x 120
<b>Power electric [kW]</b>	27.000	<b>Ratio power/volume [kW/l]</b>	0.80

# Technical data sheet

Technical drawing

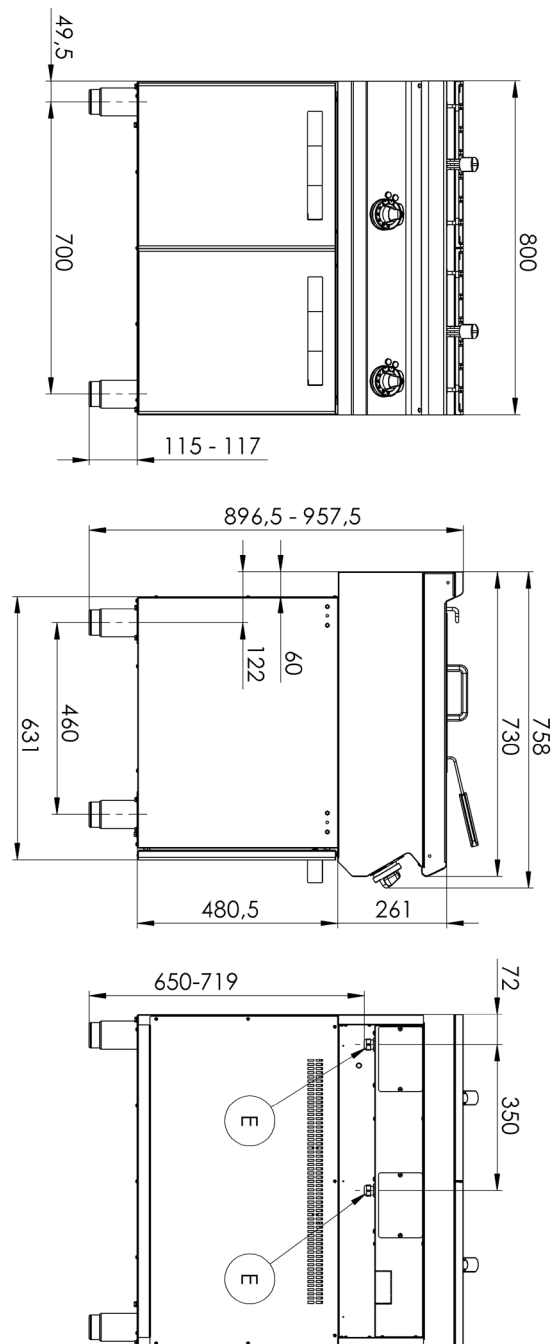


Electric fryer 27 kW

Model

SAP Code

00008321



# Technical data sheet

Technical parameters



## Electric fryer 27 kW

Model

SAP Code

00008321

### 1. SAP Code:

00008321

### 2. Net Width [mm]:

800

### 3. Net Depth [mm]:

730

### 4. Net Height [mm]:

900

### 5. Net Weight [kg]:

79.70

### 6. Gross Width [mm]:

840

### 7. Gross depth [mm]:

800

### 8. Gross Height [mm]:

1080

### 9. Gross Weight [kg]:

90.00

### 10. Device type:

Electric unit

### 11. Construction type of device:

With substructure

### 12. Power electric [kW]:

27.000

### 13. Loading:

400 V / 3N - 50 Hz

### 14. Protection of controls:

IPX4

### 15. Device color:

Stainless steel

### 16. Material:

AISI 304 top plate and cladding

### 17. Indicators:

operation and warm-up

### 18. Worktop type:

Molded - comfortable cleaning maintenance

### 19. Worktop material:

AISI 304

### 20. Worktop Thickness [mm]:

1.50

### 21. Device heating type:

Direct

### 22. Standard equipment for device:

lid and basket

### 23. Basin volume [l]:

2 x 17

### 24. Basin dimensions [mm x mm x mm]:

311 x 346 x 200

### 25. Maximum device temperature [°C]:

190

### 26. Minimum device temperature [°C]:

50

### 27. Service accessibility:

Trough the frontal panel

### 28. Safety thermostat:

Yes

# Technical data sheet

Technical parameters



## Electric fryer 27 kW

**Model**

**SAP Code**

00008321

**29. Adjustable feet:**

Yes

**30. Heating element material:**

Stainless steel

**31. Number of baskets:**

2

**32. Number of basins:**

2

**33. Basket dimensions [mm x mm x mm]:**

280 x 300 x 120

**34. Basin material:**

AISI 304 - High quality stainless steel

**35. Ratio power/volume [kW/l]:**

0.80

**36. Drain type:**

Trough the cabinet

**37. Heating location:**

Inside the tank